



Cantley

# COLLECTING TOGETHER



COMPOSTING  
**TOGETHER**



Cantley



CHELSEA



JANUARY  
1<sup>ST</sup>  
2019

# IN CANTLEY WE COLLECT COMPOSTABLE MATERIALS!

The Municipality of Cantley, caring about sustainability and proper management of waste, is being proactive with the launch of its compostable materials collection program on January 1<sup>st</sup>, 2019.

The *Québec Residual Materials Management Policy* calls for 100% of organic waste to be reclaimed by 2020.

## Get into the habit of green!

Starting on January 1<sup>st</sup>, 2019, residents are called on to get in the habit of sorting household waste and putting organic materials in the brown bin they'll receive from the Municipality.



BLUE  
BIN

Recyclables

Containers, packaging, made from plastics #1, #2, #3, #4, #5, or #7 (NOT #6), metal, paper, or cardboard



BROWN  
BIN

Compostables

Table and garden waste  
(See list on page 5)



GARBAGE  
BIN

Final waste

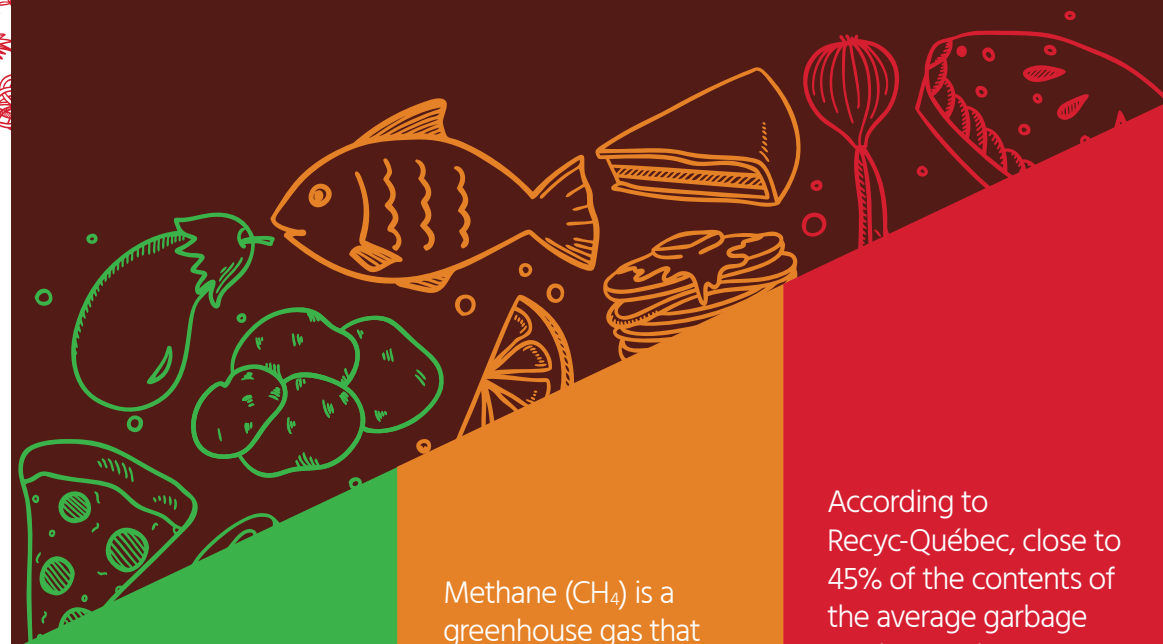
Not reclaimable

## WHY BROWN BINS?

- To take part in organic materials collection
- To reduce sending waste to landfills
- To turn organic waste into valuable compost
- To stimulate and facilitate the participation of residents and thus, together, achieve the objectives established by the government.

## LANDFILLS

- Can leach contaminants into soil, groundwater, and surface water
- Are expensive
- Are unsustainable (already at full capacity)
- Account for 20% of Canada's methane emissions



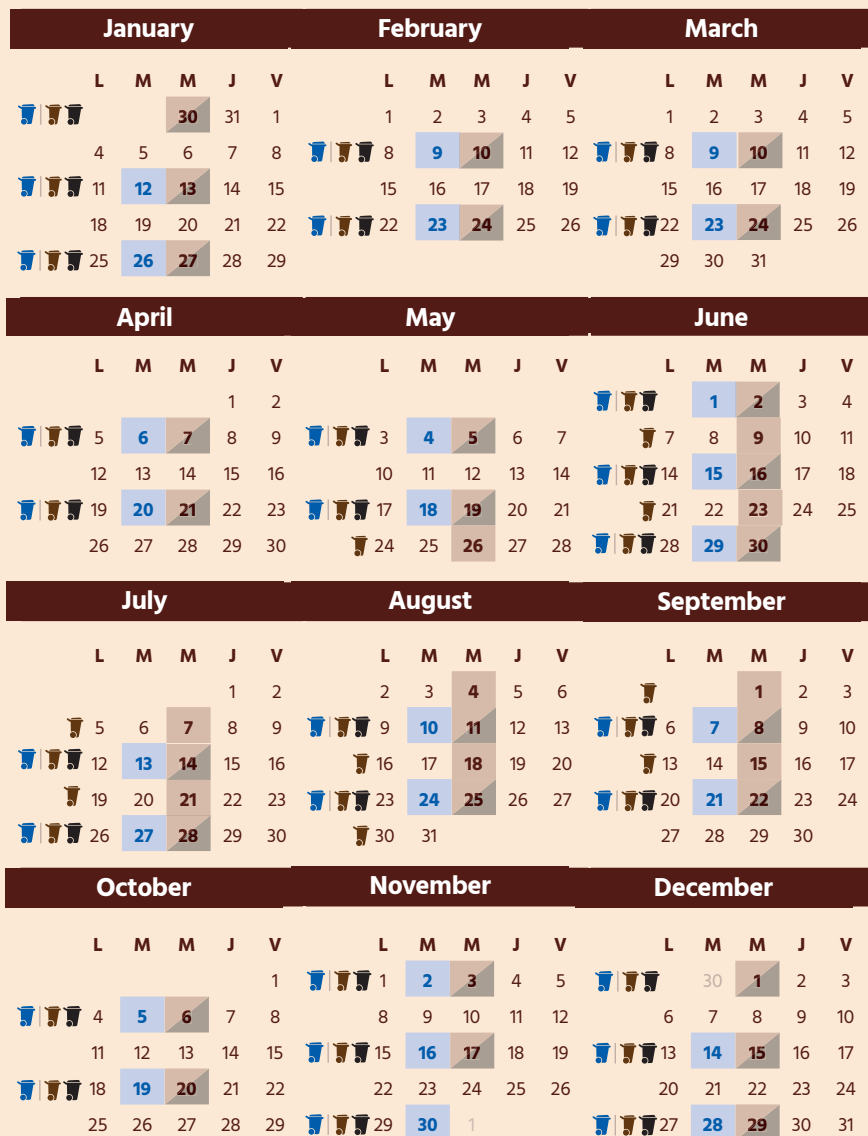
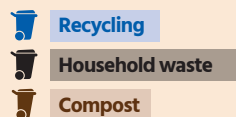
Grasscycling:  
another way to  
reduce our waste,  
by leaving grass  
clippings on the lawn  
when we mow it.

Methane (CH<sub>4</sub>) is a  
greenhouse gas that  
heats the atmosphere  
21 times as much as  
carbon dioxide (CO<sub>2</sub>).

According to  
Recyc-Québec, close to  
45% of the contents of  
the average garbage  
can is organic matter.

# COLLECTION CALENDAR

Take note that the collection frequency has changed!

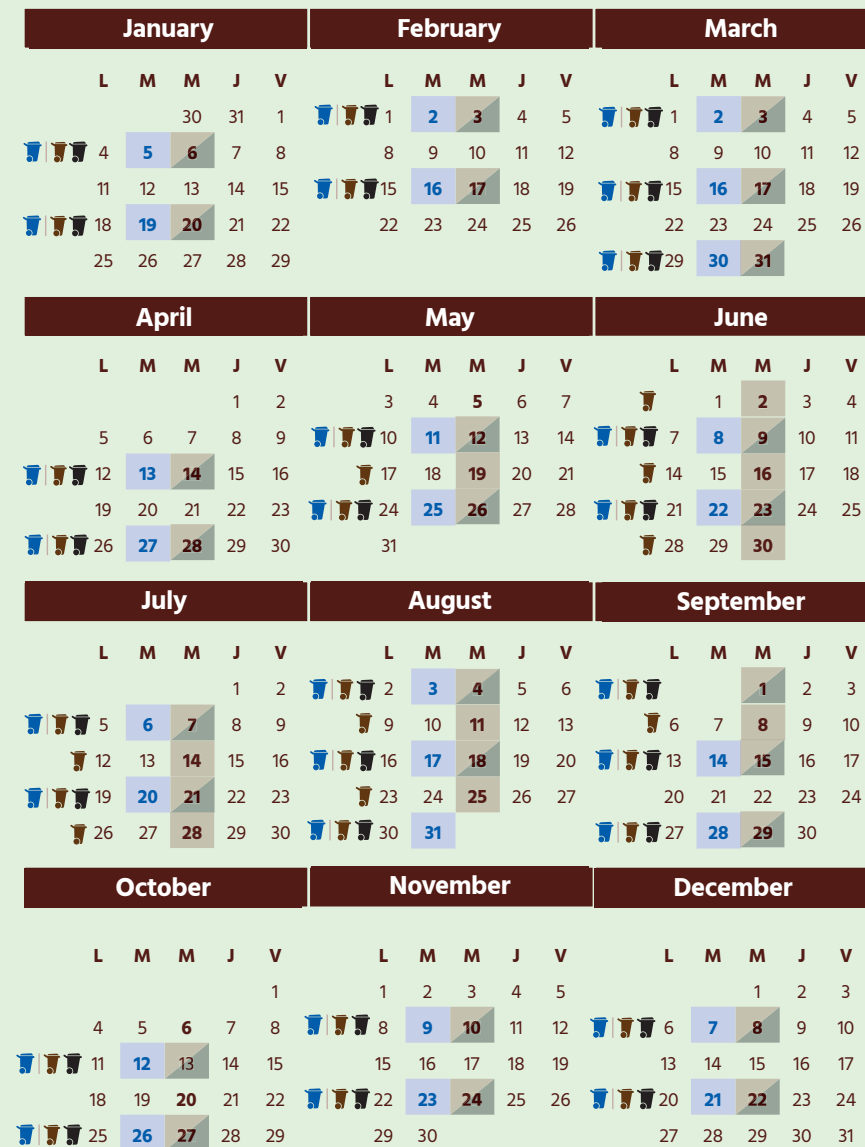


Note : District 5 (Érables) is part of the West collect

For special collection dates  
visit **cantley.ca**

# COLLECTION CALENDAR

Take note that the collection frequency has changed!



For units with curbside pickup, set waste out no earlier than 7 p.m. the evening before your collection day or before 7 a.m. the day of. Place it next to the sidewalk, curb, or road concession.

## WHAT GOES IN THE BROWN BIN?

### Raw, cooked or spoiled food

- Coffee and coffee filters, tea and teabags
- Condiments\*
- Cookies, candies, desserts\*
- Dairy products\*
- Eggs and eggshells\*
- Fish and fish bones\*
- Fruits and vegetables
- Herbs and spices
- Meat, poultry, and bones\*
- Nuts and shells
- Pasta, bread, grains, rice\*
- Pet food\*
- Seafood and seashells\*
- Vegetable fats and salad dressings\*

\* These materials are difficult to treat in home composters. Brown bin collection is your chance to get rid of them.

### Soiled paper and cardboard

- Paper handkerchiefs, towels, and napkins\*
- Paper tablecloths, plates, cups, etc.\*
- Soiled cardboard food containers and packaging (e.g., pizza boxes)\*

### Yard and plant waste

- Cold ashes
- Garden waste (except certain noxious or invasive plants listed on the website)
- Healthy or sick plants, indoor plants, and attached soil
- Leaves and lawn clippings
- Straw and hay
- Tree branches less than 1 metre long and 12 mm thick\*
- Wood chips and sawdust

## THINGS YOU CAN'T PUT IN YOUR BROWN BIN:

- Absorbent pads from meat and fish
- Cat litter and animal excrement
- Certain noxious plants (see the website for the complete list)
- Cigarettes
- Dead animals
- Diapers and personal hygiene products (dental floss, sanitary pads, cotton swabs, etc.)
- Hair, finger- and toenails, fur, feathers
- Household hazardous waste (HHW, such as waste oil, batteries, paint)
- Plastic bags (even those marked biodegradable, oxobiodegradable, or compostable)
- Plasticized or waxed paper packaging (e.g., ice-cream containers)
- Soil, sand, and gravel (except soil attached to plants)
- Styrofoam
- Textiles
- Tree trunks and stumps
- Vacuum-cleaner waste
- Wood, cement, ceramics, and other CRD (construction, renovation, and demolition) waste

## HANDY TIPS FOR DEALING WITH MINOR (OR NOT-SO-MINOR) COMPOST PROBLEMS

### Compost freezes to the bottom of the bin

- Put a big paper bag inside your bin for your compostables to go in, or line the bottom of the bin with newspaper or cardboard.

### The bin smells bad

- Put your brown bin out every collection day, especially when it's hot. Between pickups, keep your bin in the shade and avoid full sun.
- Rinse your bin with soap and water or vinegar after every collection.
- Use closable paper bags inside the bin or top it off with a layer of newspaper or leaves each time you add compostables.
- Freeze meat and poultry leftovers and don't put them in till the day before your bin is collected.
- Let your leaves and grass clippings dry out before putting them into the bin so they don't start giving off ammonia.

### Pesky animals are attracted to the bin

- Use the specially designed locking system or a bungee cord to keep the bin closed. You can also sprinkle the top of the bin with Cayenne pepper or spread some menthol around the edges. Take the same precautions as with household garbage. The safest place for your bin is in the corner of the garage with the door shut.

### The contents of the bin are infested with worms or maggots

- Rinse your bin after your waste collectors empty it and leave the lid open in the sun to dry. You can also sprinkle them with baking soda or salt, spray them with vinegar, or rinse your bin with boiling water.
- Keep the lid closed at all times. Put out your compost on every collection day, especially when it's hot. Between times, keep your bin in the shade and avoid full sun.
- Layer your table scraps with dry material in the bin (like newspaper, sawdust, dead leaves, or paper towels).
- Keep meat and poultry leftovers in the freezer and only put them in the day before they're picked up. You might also wrap them in newspaper or put them in a paper bag before they go in the bin.

# USEFUL INFORMATION

## I already compost at home. How can the brown bin be useful for me?

If you're already composting table scraps and green waste at home, municipal compost collection will fill in some gaps. The materials marked with an asterisk (\*) on the list on page 4 can be a problem for home composters, whether you have an outdoor setup or a vermicomposter. So you can choose to just keep on composting at home and use your brown bin as an environmentally friendly way to get rid of the materials your system can't handle. Municipal collection can also come in handy when you have an unusual amount of yard and green waste to deal with.

## What do I do with table scraps and other household compostables?

Collect your household compostables in a specially designed kitchen catcher (available at hardware or big-box stores), or any plastic or metal container of your choice. Empty it regularly into your brown bin. To make things easier and more hygienic, you can line your kitchen catcher with small compostable paper bags, or your brown bin with large compostable paper bags. Paper bags can be purchased, or you can use folded newspaper.

## Can I use plastic bags?

Sorry—all plastic bags are banned from your brown bin, even those marked biodegradable or compostable. This reduces program costs. However, paper or waxed bags designed for this purpose are accepted.

## What do I do if the waste pickup doesn't happen?

If your waste hasn't been picked up by the contractor by the end of the scheduled collection day, contact the Municipality the day after, within 24 hours.



**Cantley**

For more information (dates, special collections, sorting, handy tips, etc.) visit **[cantley.ca](http://cantley.ca)** or call **819 827-3434**

All residents of the MRC des Collines have access to the HHW depot located at 28 Ch. de la Pêche in Val-des-Monts. **Visit [mrcdescollinesdeloutaouais.qc.ca](http://mrcdescollinesdeloutaouais.qc.ca)**